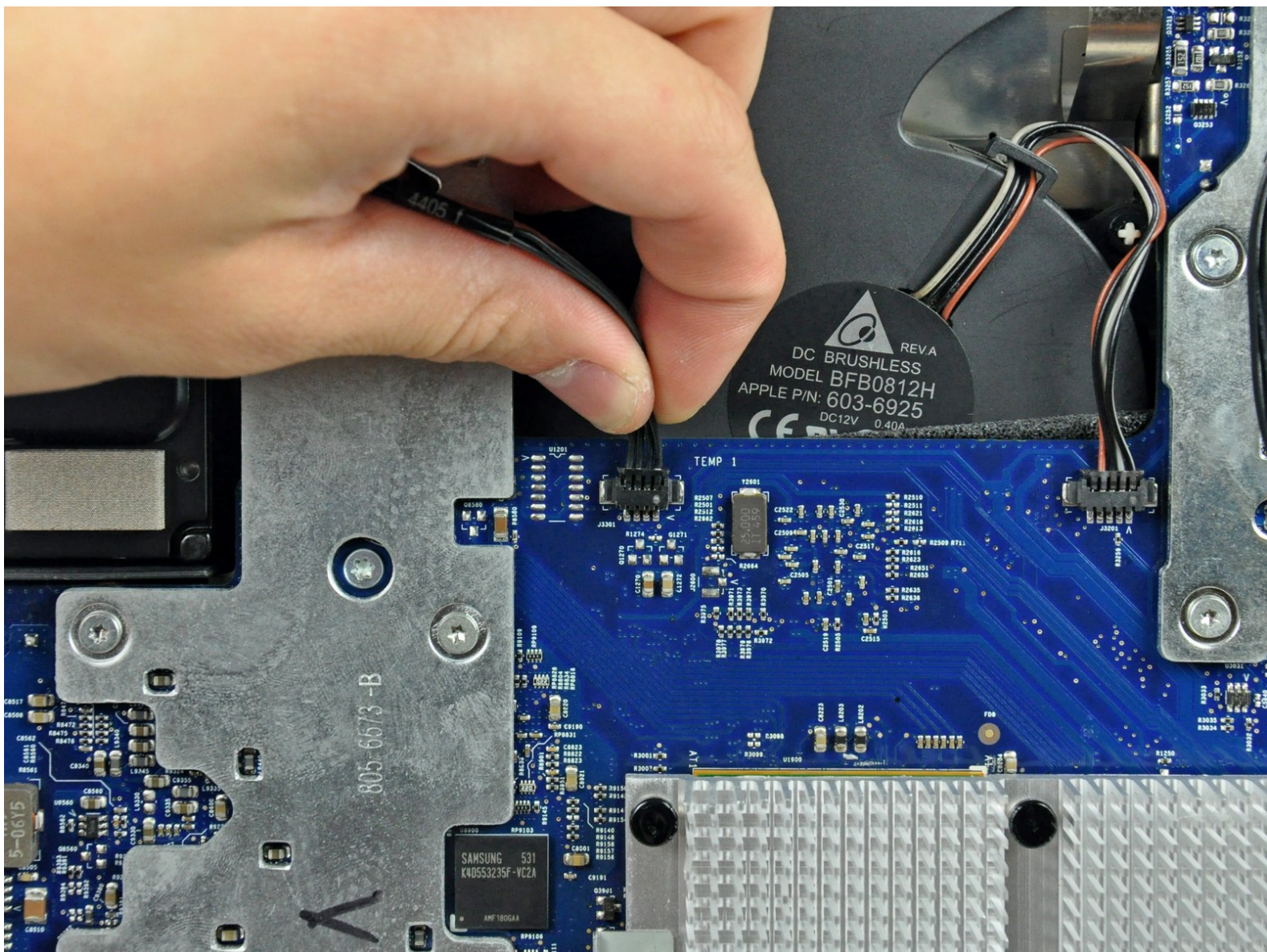




iMac G5 20" Model A1145 Hard Drive Replacement

Written By: Andrew Bookholt

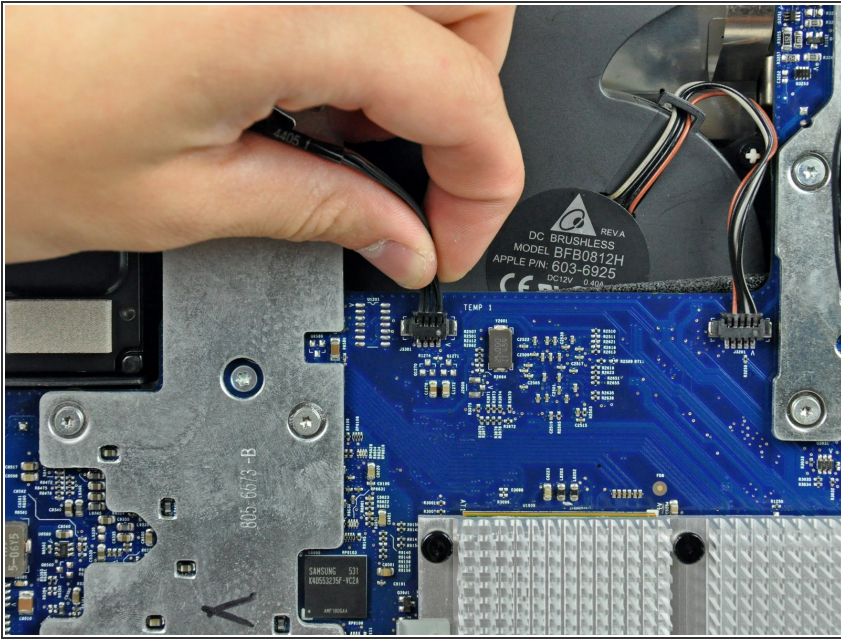




TOOLS:

- [T10 Torx Screwdriver](#) (1)
-

Step 1 — Hard Drive



- Disconnect the hard drive thermal sensor from the logic board by pulling its connector toward the top edge of your iMac.

Step 2



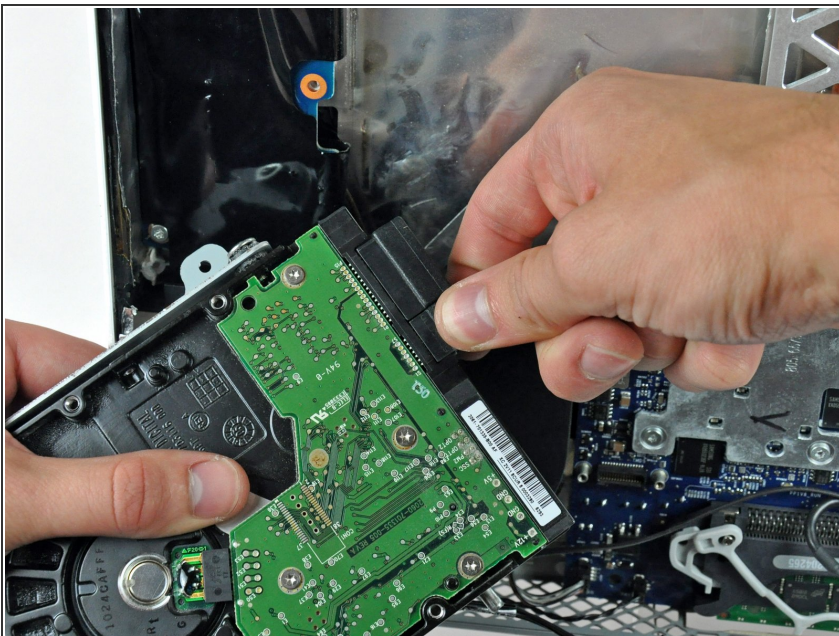
- Remove the two T10 Torx screws securing the hard drive bracket to the inverter.

Step 3



- Lift the left edge of the hard drive slightly, then pull it toward the left edge of the iMac.
- ☒ When reinstalling your hard drive, make sure not to push the rubber grommets through the chassis with the hard drive mounting pins as retrieving them may require removing the logic board.

Step 4



- Rotate the hard drive out of the rear case.
- Disconnect the SATA data cable by pulling its connector away from the hard drive.

Step 5



- Disconnect the SATA power cable by pulling its connector away from the hard drive.
- Remove the hard drive from the iMac.

To reassemble your device, follow these instructions in reverse order.